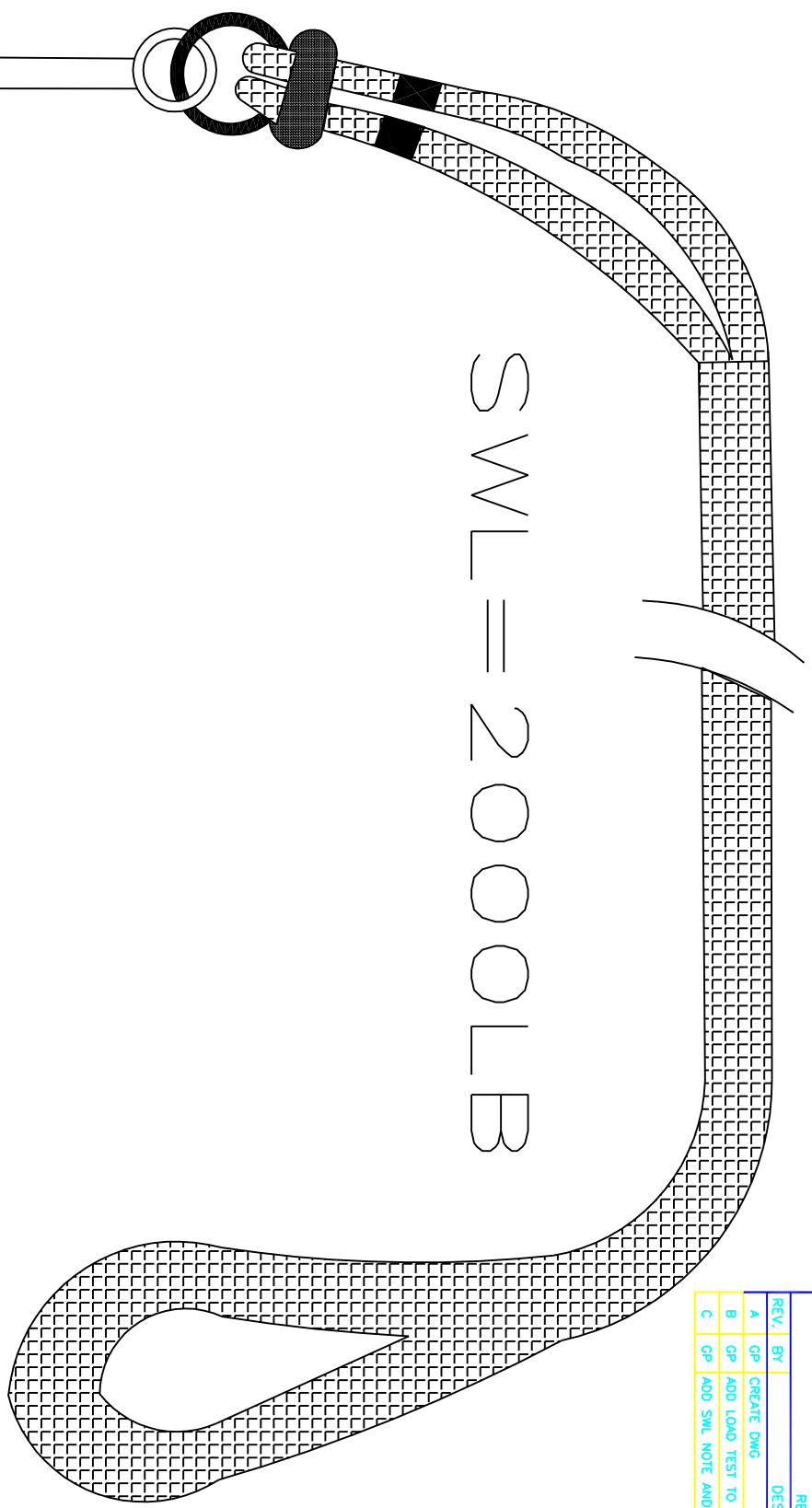


REVISIONS				
REV.	BY	DESCRIPTION	DATE	APP'VD
A	GP	CREATE DWG	8/28/09	
B	GP	ADD LOAD TEST TO DWG	3/9/10	
C	GP	ADD SWL NOTE AND OVERALL SPEC.	5/31/13	



SWL = 2000LB

MAT'L AND PROCEDURE

- 1/2" PLASMA ROPE X 40FT - PUGET SOUND ROPE # 12 STRAND X 1/2"OD
- 18" J HOOK W/WELDED LINK-EMBLUES PART #BA7N11-2-L
- ELECTRICAL TAPE
- SEE VIDEO FOR SPLICING INSTRUCTIONS - LOCATED IN [I DRIVE] > [ENG FOLDER] [EQUIPMENT] > [PLASMA ROPE] > [SPLICING VIDEO]
- LOAD TEST FINAL ASSEMBLY AT 4,000LB FOR SPECIFIED TIME.
KEEP APPLYING LOAD UNTIL LOAD STABILIZES > IT MUST MAINTAIN THAT LOAD FOR 5 MINUTES > ACCEPTABLE CRITERIA: LOAD MUST MAINTAIN A MINIMUM OF 3900LB.

REF #	ITEM #	REQ	DESCRIPTION
			<p>TDI BROOKS INTL 1902 PINON DR COLLEGE STATION, TEXAS 77845</p> <p>TITLE: PLASMA-PC-COREHEAD-40FT MODEL: PC</p> <p>UNLESS OTHERWISE NOTED: INTERPRET DIM. & TOL. PER ASME Y14.5M-1994 ALL DIMS. ARE IN INCHES TOLS: .XX+015 .XXX+005 ANGLES :1° DO NOT SCALE DRAWING</p> <p>THIS DOCUMENT CONTAINS TRADE SECRETS AND/OR PROPRIETARY INFORMATION. IT IS LOANED FOR LIMITED USE ONLY AND IS NOT TO BE REPRODUCED OR TRANSMITTED IN ANY FORM OR BY ANY MEANS, ELECTRONIC OR MECHANICAL, INCLUDING PHOTOCOPYING, RECORDING, OR BY ANY INFORMATION STORAGE AND RETRIEVAL SYSTEM. ANY UNAUTHORIZED DISCLOSURE OR USE OF THIS DOCUMENT IS STRICTLY PROHIBITED. THIS DOCUMENT IS TO BE RETURNED UPON REQUEST AND IS NOT TO BE REPRODUCED OR TRANSMITTED IN ANY FORM OR BY ANY MEANS, ELECTRONIC OR MECHANICAL, INCLUDING PHOTOCOPYING, RECORDING, OR BY ANY INFORMATION STORAGE AND RETRIEVAL SYSTEM.</p>
			<p>DRAWN BY: GP DATE: 8/28/09 DES. ENG. DATE: PROD. ENG. DATE: MFG. ENG. DATE: REL. PROD. DATE:</p> <p>SCALE: NONE DRAWING NUMBER: 1209 SHEET 1 OF 1 REV. C00</p>